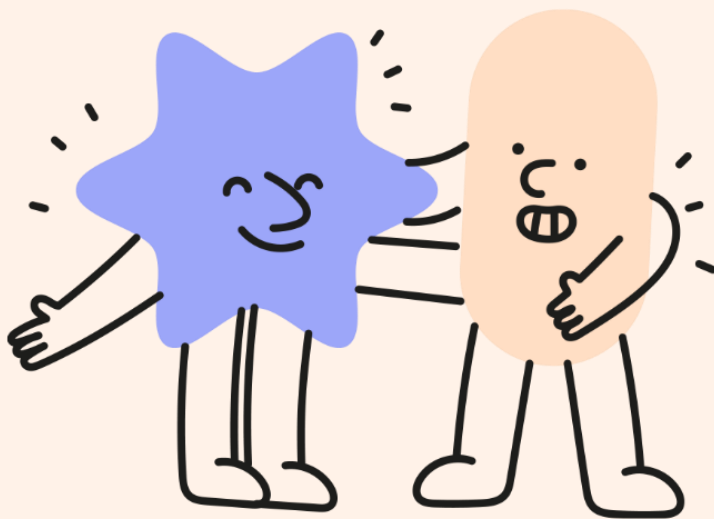




**Bolton
Family Hubs
Network**

WORKFORCE NEWSLETTER

Third edition - May 2024



Your guide to what's happening in Bolton Family Hubs and across the wider network, as well as updates on useful resources and training opportunities

WHAT'S IN THIS ISSUE?



FAMILY HUBS PROGRAMME RECAP	3
BOLTON FAMILY HUB UPDATES	4
BOLTON FAMILY HUB PRACTITIONERS	7
PARTNER UPDATES	9
SPOTLIGHT ON COLLABORATIVE WORKING	15
UPCOMING EVENTS	17
USEFUL TOOLS & RESOURCES	18
WORKFORCE TRAINING OFFER	19
THANK YOU & FEEDBACK	20



FAMILY HUBS PROGRAMME RECAP



The **Family Hubs and Start for Life programme** is jointly led by the Department for Education (DfE) and Department of Health and Social Care (DHSC). It helps meet commitments set out in the [*The Best Start for Life report*](#)



FAMILY HUBS WILL:

- Have a Start for Life offer for families with 0-2 year olds at their core and provide support for families with 0-19s (up to 25 with SEND).
- Aim to provide a *single access point* to a range of services for families – a ‘front door’ to *universal* and *early help* services – and involve *co-location* of services and professionals.
- Be expected to deliver 24 core services – Some of which came with additional funding (Infant Feeding, Parenting Support, Parent-Infant Relationships and Perinatal Mental Health)
- Focus on **3 delivery areas** (or Principles):

ACCESS

Providing families with a clear, simple point of access for help & support

CONNECTION

Improving connections between services, professionals & sectors

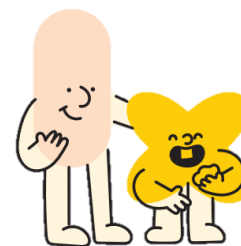
RELATIONSHIPS

Putting families & relationships at the heart of support and building on strengths

FOR MORE INFO, VISIT:

- [Family Hubs and Start for Life - Programme guide](#)
- [Family Hubs and Start for Life programme - GOV.UK \(www.gov.uk\)](#)
- [National Centre for Family Hubs](#)
- [Family Hubs Network - Helping local authorities and VCS help families](#)

FAMILY HUB UPDATES



‘WHAT’S ON GUIDE’

The new April – July edition of our Bolton Family Hubs ‘*Guide to What’s on for Families in Bolton*’ has been published using our new branding. It provides an overview of the services on offer for families with 0-19/25s across the wider Family Hubs Network plus a timetable of sessions for each Family Hub.

Hard copies available from Family Hubs, libraries and other buildings. A digital copy can be accessed [here](#).

Or visit our webpage below for more info:

[Bolton Family Hubs – Bolton Council](#)



WELCOMING SPACES

The Family Hub Practitioners have been working hard to transform the entrances and waiting areas within the Family Hub buildings.

The aim is to create warm, welcoming, child friendly spaces for families to come and play, read and connect in.

The areas promote opportunities for families to read, play and mark make.

Please encourage and support families to use these areas and if you have any feedback or suggestions, contact the Family Hub Practitioners.

From this 😞...



...to this 😊



LAUNCH OF COMMUNITY LIBRARIES

On the 4th March the Family Hub Practitioners helped launch the community libraries at Farnworth and Alexandra Family Hubs, where families can take, swap and share the books on offer and get information about their local and central library.

The handmade themed wooden bookshelves were provided by the Men in Sheds project.

For more info, contact Hannah.brown@bolton.gov.uk



DISPLAY REVAMP

As part of development of the welcoming spaces, the Family Hub Practitioners have been refreshing the displays within the Hubs to promote communication and language and health topics such as safer sleep as well as What's sessions are on within the Hubs.

Please do take a look at these and let us know what you think!



FAMILY HUB TVS

The Family Hub Practitioners and Admin staff are now producing the TV screen content within the Family Hub buildings using the new branding. The TVs promote what's on, campaigns and events.

If you would like content adding to these screens please contact Hannah.brown@bolton.gov.uk

BRANDING & COMMS

As part of the Family Hubs programme development, a communications working group was established to oversee and implement a range of communication and engagement activity. This includes development of the Family Hub branding, Lunch and Learn sessions, newsletter, brand launch and the What's on Guide. Over the coming weeks the group will focus on:

- Official brand launch including logo's, poster, newsletters and signage to increase the visibility of the Family Hub offer within our communities.
- Development of a workforce e-learning package open to all stakeholders and focused on key topics across the 24 wider services.
- Develop a plan to progress the digital offer for families in Bolton aligned to wider My Life in Bolton developments. This will enable families and professionals to access a range of information and self help online.
- Development of a Family Hubs video to promote the offer to families.

If you have any ideas for the group to focus on, including e-learning modules, please contact:

Elizabeth.simister@boltonft.nhs.uk

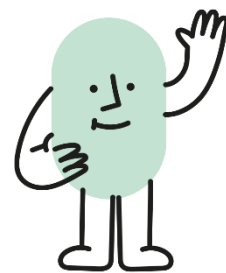
FAMILY HUB OPERATIONAL MEETINGS

In April, each Family Hub held their first Operational Group meeting. The purpose of these meetings is to provide a regular opportunity for representatives of those working in the building to come together.

These meetings provide a space for effective communication and collaborative working to be generated. They can also address any issues related to the practical day to day running of the building. The first round of meetings were well attended and agreed the Terms of Reference going forwards.

If you would like to attend these meetings or find out about future dates please contact Sommer.brook@bolton.gov.uk

FAMILY HUB PRACTITIONERS UPDATE



Over the past few months, the team have been:

- Taking part in lots of training on topics across the different strands.
- Promoting Family Hub groups/ offer both within the Hubs and in the community.
- Building connections and relationships within the community and gathering parent feedback about the Family Hubs as part of the co-design work.
- Meeting parents in the Family Hubs and supporting them going to the groups and stay and plays if they are anxious.
- Creating the Community Libraries at Farnworth and Alexandra.
- Updating the screens within the Family Hubs in partnership with Admin.
- Updating and maintaining the displays and children's areas in the Family Hubs in partnership with Centre Assistants.
- Co-delivering on Solihull with Families Together.
- Delivering Happy Healthy Babies, a 6 week group for 0-6m at Oxford Grove, Farnworth, Great Lever, Oldhams and Tonge Family Hub. The next course of groups start from the 3rd June when sessions will also be held at Alexandra Family Hub.
- Attending and providing activities for Family Hub events such as the Family, Fun and Food events.
- Promoting local and national campaigns within the Family Hubs and community in collaboration with various teams such as, the Oral Health Team, during World Oral Health Day.

FAMILY HUB PRACTITIONER CONTACT DETAILS

SENIOR FAMILY HUB PRACTITIONERS

- Hannah Brown Hannah.brown@bolton.gov.uk – 07379077050
- Lizzie Simister Elizabeth.simister@boltonft.nhs.uk – 07746535284



ALEXANDRA FAMILY HUB

- Dawn Jemmett Dawn.jemmett@bolton.gov.uk - 07379077041
- Fazila Lasania fazila.lasania@boltonft.nhs.uk - 07435879034



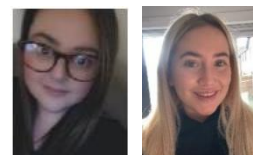
FARNWORTH FAMILY HUB

- Katie Campbell katie.campbell3@boltonft.nhs.uk - 07554227615
- Tina Mather Tina.mather@bolton.gov.uk - 07379077191



GREAT LEVER FAMILY HUB

- Nicola Kenny Nicola.kenny@bolton.gov.uk - 07379077034
- Jess McKewan Jessica.mckewan@bolton.gov.uk - 07379077153



OXFORD GROVE FAMILY HUB

- Julie Parkinson Julie.parkinson2@boltonft.nhs.uk – 07917071653
- Leanna Brown Leanna.brown@bolton.gov.uk – 07379077047



TONGE FAMILY HUB

- Sarah Bartlett Sarah.bartlett1@bolton.gov.uk - 07379077146



Please get in contact to see how we can support you & your families 😊

PARTNER UPDATES

PUBLIC HEALTH NURSING ANTENATAL PILOT

The 0-19 Public Health Nursing team is currently piloting the delivery of group antenatal classes at Oxford Grove Family Hub. Local pregnant women and their partners are invited to attend an informative session which covers a range of topics including the role of the HEALTH VISITOR, the importance of safe sleep, infant feeding and how to develop relationships with baby. The sessions have also been attended by the Family Hub Practitioners to promote what sessions are available both antenatally and once baby is born.

EARLY HELP PARENTING DROP-INS

Did you know the Targeted Early Help Team run drop-in sessions at 3 of our Family Hubs on Saturdays?

If families are struggling with their child's behaviour, school attendance or anxiety, they can simply call in for advice and further information.

Open to all families with children under 18 years old.

Please share 😊



Early Help Parenting Drop-in

For all families with children under 18

We know that being a parent is not always easy and that families need extra support at some stage as children grow up.

Targeted Early Help Workers will be on hand to offer advice and support.

We can offer signposting to helpful services, organisations and community groups.

Are you struggling with your child's behaviour?

Not sure what services there are available that can help to support you?

Poor school attendance?

Are they being excluded from school?

Are they anxious or struggling with self-esteem?

Come and join us for a cup of tea and a chat if you want any advice or information about parenting.

Drop-in sessions, 9.30am - 3.30pm

Farnworth King St Centre	18 May	15 June	6 July	27 July	17 Aug
Oxford Grove Children Centre	1 June	22 June	13 July	3 Aug	
Tonge Children Centre	11 May	8 June	29 June	20 July	10 Aug

For more information please contact:
Targeted Early Help Tel: 01204 337390
Email: earlyhelp@bolton.gov.uk

Bolton Start Well **Bolton Council**

DUMMY HEROES

Dummy heroes is a campaign that is ran twice a year, facilitated by the Early Years Communication and Language Development Service (EYCLDS) and the Oral Health team. They give tips to families about how to help their child give up their dummy. They are also available to talk to families about their children's speech and language development and give advice on how to keep their mouth and teeth healthy. See their upcoming events.



Little Lever Library

Friday, 17 May 2024
10:30am - 12:00pm

High Street Library

Monday, 20 May 2024
10:30am - 12:00pm

Bromley Cross Library

Thursday, 23 May 2024
2:30pm - 4:00pm

Brightmet Library

Wednesday, 29 May 2024
10:30am - 12:00pm

Central Library

Friday, 31 May 2024
11:30am - 1:00pm



NEW BOLTON DEAF SOCIETY PLAYGROUP

Please see the flyer for the new playgroup starting in May, contact Louise below for more information.

And visit www.boltondeafsociety.co.uk to see the wider services available.



Louise Donlan



LOUISE DONLAN
Children's Services



Charity number: 1191838
playgroup2@boltondeafsociety.co.uk
Bark Street, Bolton, BL1 2AX
www.boltondeafsociety.co.uk

BRIGHT START PLAYGROUP

STARTS 20th MAY

Monday 10.30am-12.00pm
(Term time only)

Ages 0-5 years

Deaf, deafened, hard-of-hearing and hearing parents and children welcome

FREE

Join us at:
Bolton Deaf Society
Bark Street
Bolton
BL1 2AX

For more information email:
Playgroup1@boltondeafsociety.co.uk
Phone : 01204 521219

Bolton Deaf Society
Registered Charity Number: 1191838

PARTNER UPDATES

Bolton

Together

Bolton Together are the children and young people's voluntary and community sector consortium for Bolton. We work with VCSE Sector organisations supporting families, young people, and children of Bolton. 8 of our members are funded to deliver on the Family Hub Programme:

PARENT CARER PANEL

Bolton Toy Library Coordinate the Parent Carer Panel. They last met in March 2024. Their contributions will help to design the Family Hub offer ensuring it is informed by parent, carer voice.

STAY & PLAY SESSION OFFER

The sessions vary from accessing the Toy Library play sessions, to exploring the outdoors with a 10 week forest school course. We deliver at:

Oldhams Start Well Centre, Harvey Start Well Centre, The Roost, Ashley Avenue, Bright Meadows, Great Lever Family Hub, Alexandra Family Hub, Sutton Community Centre, Farnworth Family Hub, Tonge Family Hub, The Hub Westhoughton

See the Bolton Family Hubs 'Guide to what's on for families' for more info.



PERINATAL MENTAL HEALTH OFFER

This includes group peer support with trained facilitators and one-to-one support, available to parents and carers with mild mental health worries.

Delivered by **5 organisations**, please contact for more information::

- LGBT+ Parent Support - Proud2bParents: info@proud2bparents.co.uk
- HomeStartHOST: info@homestarthost.org.uk
- MhiST: Jayne.oakley@mhst.co.uk
- Bolton Toy Library: enquiries@boltontoylibrary.org.uk
- Little Bats Learning: littlebatslearning@hotmail.com



INFANT FEEDING PEER SUPPORT OFFER

Breastfeeding Together provide one-to-one support on maternity wards at Royal Bolton Hospital to support breastfeeding initiation, responsive feeding and building relationships. They also provide antenatal classes, an infant feeding peer support service including evenings and weekends, home visits, pump hire, live chat online parenting support and they run Chat, Stay and Play drop-ins within the Family Hubs too.

Base: Oxford Grove Family Hub.

Telephone: 01942 236111 or 07742 234496

Email: Enquiries@breastfeedingtogether.co.uk

Facebook: Breastfeeding Together



SOLIHULL PARENTING COURSES:

These 10-week '*Understanding your child*' courses are for families with under 3's living in Bolton.

- Each session is 2 hours.
- These are friendly and interactive groups which support the development of positive parent & child relationships.
- Parents do NOT need to be experiencing difficulties with their child's behaviour to attend.
- Under 3's can attend if required, some venues will have crèche.
- 5 new courses start in May across Bolton.
- Courses are delivered by Families Together in collaboration with, Flowhesion Foundation and the Family Hub Practitioners.



To book, families or professionals can:

- Complete this form: <https://forms.office.com/e/VrKEC4qWCM>
- Or call: 01204 337 092 / 0774 223 4496

Bolton Together Family Hub Programme:

Here at Bolton Together we work with eight organisations, delivering activity as part of the Bolton Family Hub Programme. This delivery began in September 2023.

Key Achievements

425 parents supported with infant feeding at Bolton Foundation Trust Hospital.

100% of parents feel more connected and less isolated.

228 parents contributed to shaping Family Hub delivery and development.

Parents observed increases in their confidence, and their understanding of child development.

282 Stay and play sessions were offered.

584 families attended Stay and Plays.

To find out more please contact:
Katrina.Fletcher@BoltonTogether.org.uk





Bolton

Together

Delivering high-quality integrated services for children, young people and their families in Bolton.

Working collaboratively to improve the quality of life for communities.

Through voluntary sector-led collaboration, we deliver high-quality, cost-effective integrated services for children, young people, and their families in Bolton. Our focus is working in partnership to support Bolton families and improve outcomes.

Our Services



IThrive Service: 2-25 Years

Supporting Children and young people with their Emotional Health. 14 Bolton VCSE's offer support through our IThrive Offer. Find out more here: [IThrive Overview of Services](#)



Bolton Together Family Hub Programme

Through integrated working we offer Early Years services as part of our Family Hub programme Offer. Find out more here: [Bolton Together Early Years Offer](#)



Holiday Food and Activity Programme and Youth Offer

Supporting Children and young people with Outreach support and delivery of diverse activities.



Social Media

LinkedIn: [Bolton Together](#)
Email: BoltonTogether@boltontogogether.org.uk

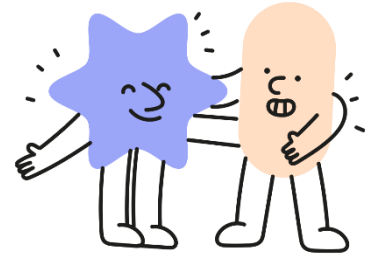
Key Achievements

- ✓ Delivery of IThrive to 2 - 19 years (25 with SEND)
- ✓ A robust and comprehensive membership with 40 Voluntary, Community and Social enterprise organisations.
- ✓ Co-designing the Family Hub Offer in Bolton
- ✓ Sharing good practice and supporting CYP through the IThrive programme 2 - 19 years
- ✓ Peer support offer, supporting parents/carers
- ✓ 1039 referrals received into the IThrive Hub between '24/'25
- ✓ Impactful Cross Sector collaboration

Get in touch with us  [**BoltonTogether@boltontogogether.org.uk**](mailto:BoltonTogether@boltontogogether.org.uk)

Registered Charity in England and Wales (1163466)

SPOTLIGHT ON COLLABORATIVE WORKING



FAMILY FOOD & FUN EVENTS

On Saturday 16th March and 27th April, Tonge and Oxford Grove Family Hubs hosted Family Food and Fun events to engage with the local communities and help support with the cost of living through providing a free raffle for cooking equipment such as air fryers. Both events were well attended and feedback from families was positive, they enjoyed the range of activities provided and were able to get the opportunity to learn more about the Family Hub offer through speaking to the Family Hub Practitioners. Parents said they would like to see more events like this done in the future. Those working in collaboration with Family Hubs to make both events such a success include:

Holidays Activities and Food, who provided outdoor activities for all the children who attended, Urban Outreach, who provided cooking demonstrations, making vegetable wraps which families ate at the end of each demo, Proud2bparents, who provided craft activities at Tonge and Note Weavers, a community interest company, provided musical activities for the children.

FAMILY FUN DROP-IN

This event was held at Farnworth Family Hub on the 5th April during the Easter holidays with activities provided by the Family Hub Practitioners in partnership with Farnworth Library, who ran Toddler Tales sessions and Money Skills, who provided financial support and advice to families. This event was also well attended by over 80 families. There were a wide range of activities on offer for children such as, dough disco, arts and crafts and messy malleable trays based on the Start Well Stories. All the activities were designed to promote early learning and development across different areas.

CONSULTATION WITH SCHOOLS

Senior Family Hub Practitioners have recently attended the Early Education Improvement Group which has given them an insight into families and communities values within different schools and settings. This has helped inform how Family Hub Practitioners make connections and spread the Family Hub offer. There have also been discussions of what schools and settings feel their families may benefit from and would like to see in Family Hubs.

The link below takes you to a survey which schools and settings have completed where they have given this feedback to inform Family Hub groups, services, and future events.

<https://forms.office.com/Pages/AnalysisPage.aspx?AnalyzerToken=YnDNemVl8SEuMlcPAXU2T3SLIYM uOzZ5&id=FoJ6xyvyHU-xdwTu7gcXEwEbzyaMktEj6ziOdLscY9URFdMUEg4WkE2NkNSRk5YT1JJWTVNSkdBRi4u>

SPOTLIGHT ON COLLABORATIVE WORKING

PARENT CARER SUBGROUP

As part of the Bolton Family Hub Programme work, Bolton Together have brought a group of professionals together to focus on reviewing feedback from our parent carer panel and wider parent consultation. The group is working to identify patterns in feedback and create processes for implementation. The group has met twice and will continue to meet quarterly to ensure parent feedback is heard and implemented wherever possible. If you would like to collaborate on this or attend the group, please email Katrina.Fletcher@BoltonTogether.co.uk.

5 GOLDEN RULES WORKING GROUP

A working group of practitioners across organisations and settings have been meeting to update the tips to promote communication and language listed on the Bolton Start Well website [here](#). The group are focused on updating the resources with practical tips and useful videos that can support the development of communication and language.

Once complete, these tips will be available for use by practitioners in settings and by families within the home learning environment. For more information about this working group, please contact Lyndsey.Longworth@bolton.gov.uk

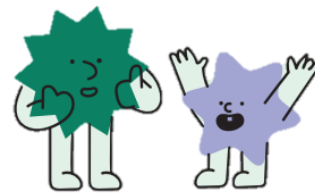
FAMILY FRIENDLY PATHWAYS WORK

A working group of practitioners and parents came together in April for the first of a short series of consultation meetings to discuss how the existing [Bolton Early Years Integrated Pathways](#) could be adapted into a more family friendly format.

The aim is to be able to present information about what services are routinely there for everyone and where they go for additional help and support from pregnancy until their child reaches school age. This is not to change any pathways but to present them in a more succinct format that can be easily shared by professionals. For more information about this working group, please contact Dawn.france@bolton.gov.uk



UPCOMING EVENTS



NATIONAL SMILE MONTH

13th May – 13th June 2024

A campaign to raise awareness of important oral health issues.



[National Smile Month | Home | Oral Health Foundation \(dentalhealth.org\)](#)

TOOTHY 'TODDLER TALES' SESSIONS

Bolton NHS Foundation Trusts 'Oral Health Team' will be telling '*Toothy Toddler Tales*' at Bolton Libraries for National Smile Month:

- Farnworth Library Tuesday 14th May at 11am
- Little Lever Library Friday 17th May at 10.30am
- High Street Library Monday 20th May at 10.30am
- Bromley Cross Library Thursday 23rd May at 2.30pm
- Brightmet Library Wednesday 29th May at 10.30am
- Central Library Friday 31st May at 11.30am
- Harwood Library Monday 3rd June at 10.30am
- Central Library Friday 7th June 2024 at 11.30am



For further info, contact the Healthy Families Team on 01204 463175

JOIN US FOR
THE NATIONAL
BRUSHATHON

On Mon 13th May @ 9am

Vision | Openness | Integrity | Compassion | Excellence

National Smile Month

National Smile Month 2024 - National Brushathon
Join us on Monday 13th May
at 9.00am for the 'Great British Brushathon'
If you cannot brush at 9.00am, Just find a time and brush when you can!
Please be sure to share your pictures and posts
with us via social media by tagging us ☺

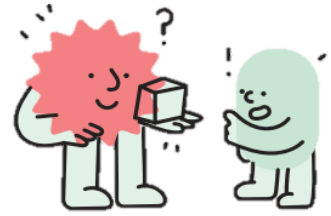
[Twitter](#) [Facebook](#)

@boltonnhsft Bolton NHS Foundation Trust
@boltoncouncil Bolton Start Well
@BoltonStartWell Bolton Council
@smilemonth Bolton Library and Museum Services

... for a better Bolton

Love your smile

USEFUL TOOLS & RESOURCES



KOOTH LIVE ASSEMBLYS

You can book a 30-minute live-streamed session for your class to coach students through a range of mental health topics relevant to their age group.

Kooth Live Assembly Mental health support direct to classrooms

Book a 30 minute live streamed session direct to your classroom.

Exam Stress
APRIL
Year 10 - 13

Online Safety
MAY
Year 7+

SATs
MAY
Year 6

linktr.ee/KoothEngagementTeam



Greater Manchester Health and Social Care Partnership

GMCA Greater Manchester Children's Alliance NHS in Greater Manchester

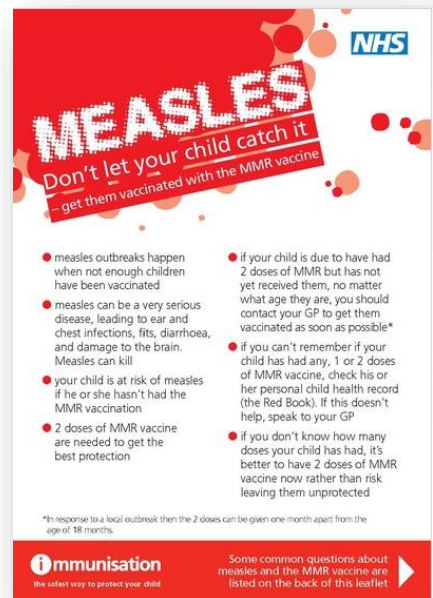
[Book our May online safety webinar](#) - all year groups

[Book our May Year 6 SATs webinar](#) - Year 6 students

MEASLES UPDATE

Please see link to the latest 'Measles: Frequently asked questions' from NHS England. [NHS England measles update \(April 2024\)](#)

Also see [Measles - NHS \(www.nhs.uk\)](http://www.nhs.uk)



MEASLES
Don't let your child catch it
- get them vaccinated with the MMR vaccine

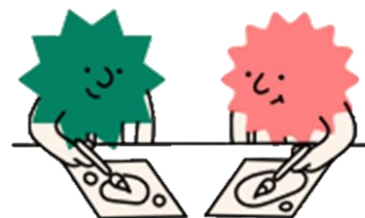
- measles outbreaks happen when not enough children have been vaccinated
- measles can be a very serious disease, leading to ear and chest infections, fits, diarrhoea, and damage to the brain. Measles can kill
- your child is at risk of measles if he or she hasn't had the MMR vaccination
- 2 doses of MMR vaccine are needed to get the best protection
- if your child is due to have had 2 doses of MMR but has not yet received them, no matter what age they are, you should contact your GP to get them vaccinated as soon as possible*
- if you can't remember if your child has had any, 1 or 2 doses of MMR vaccine, check his or her personal child health record (the Red Book). If this doesn't help, speak to your GP
- if you don't know how many doses your child has had, it's better to have 2 doses of MMR vaccine now rather than risk leaving them unprotected

*In response to a local outbreak then the 2 doses can be given one month apart from the age of 18 months.

immunisation
the safest way to protect your child

Some common questions about measles and the MMR vaccine are listed on the back of this leaflet

WORKFORCE TRAINING OFFER



STARTWELL TRAINING:

Bolton Start Well offer a range of training courses for early years professionals. Please link to courses [Courses – Bolton Start Well](#)

SAFEGUARDING CHILDREN TRAINING:

The Bolton Safeguarding Children Partnership (BSCP) arrange and coordinate courses for multi-agency staff and professionals working with children in Bolton. Please see link to their full training brochure below:

[Multi-agency Safeguarding Children training Brochure](#)

To book or add yourself to the BSCP training circulation list, contact:

Nick Howarth, Multi-Agency Training Officer, Castle Hill Centre
01204 337861 multiagencytraining@bolton.gov.uk

MENTAL HEALTH TRAINING:

[Mental Health Training Brochure](#) offers a range of courses that are open to all people working and volunteering in Bolton. See [Booking Form](#)

HEALTHY FAMILIES TEAM TRAINING:

The Healthy Families Team offers a programme of workforce training for multi-agency staff working with children and young people in Bolton. Please see the link to their training brochure below:

[healthy-families-training-programme \(boltonstartwell.org.uk\)](https://boltonstartwell.org.uk/healthy-families-training-programme)

They can offer bespoke training to single teams, delivered face to face or on MS Teams. For more info contact ceri.blackmore@boltonft.nhs.uk



Thank you for reading 😊

FEEDBACK AND SUGGESTIONS

Please email Elizabeth.simister@boltonft.nhs.uk if you would like to be added to the newsletter distribution list.

Please also let us know your feedback regarding the content of this newsletter and whether you have found the information useful.

We would also welcome any suggestions for future editions.